


# Analysis of Forested Lands Important to Water

## Explanation

 Deciduous/Coniferous Forested Lands Available for Development

- Forested Land based on 2002 CLEAR Landuse data that has development potential.


 Deciduous/Coniferous Forested Lands NOT Available for Development

- Forested Land based on 2002 CLEAR data that is either developed or has environmental constraints (wetland, flood plain, or steep slope.)

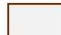
 Committed Open Land

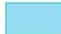
For the purposes of this analysis, the Coalition Land Use Committee defined these areas as lands that will never be developed including:


- federal, state, local, and private committed open space
- land trust lands
- conservation easements
- cemeteries
- water company land Class I and II

 Main Roads within Pomperaug

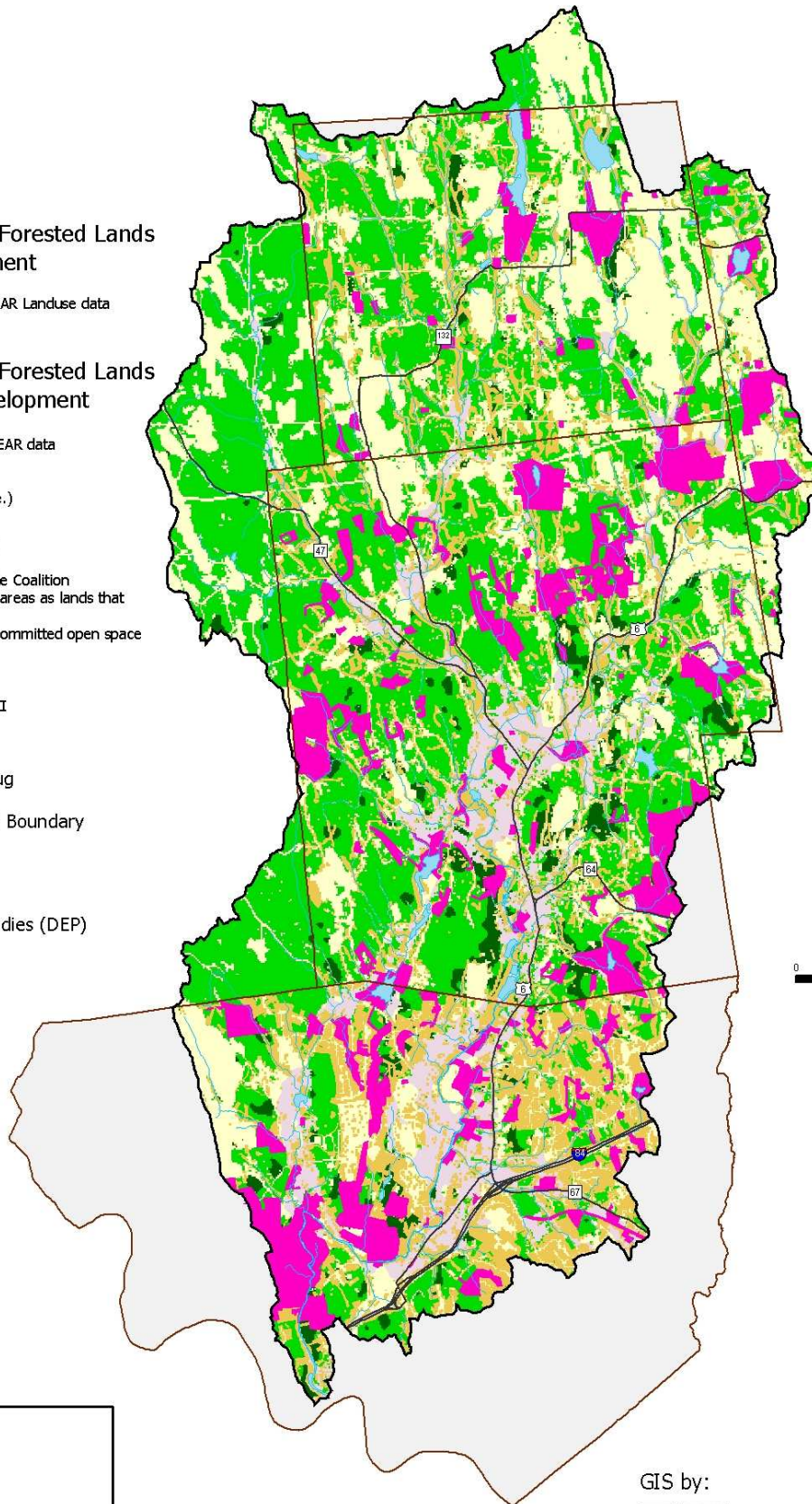
 Pomperaug River Watershed Boundary

 Town Boundaries

 Major Streams and Water Bodies (DEP)

 Aquifer (Prepared by USGS)

DRAFT



### Source Data:

Lambert Conformal Conic,  
State Plane Coordinate System  
North American Datum of 1983 (NAD83)

"Town Boundary, Pomperaug Boundary,  
Roads, Hydrography" - 1:24,000 1969-1984, CT DEP  
"Unbuildable Forested Area, Committed Open Space" - COGCNV  
"2002 Land Cover", 100 sq ft resolution, - 2002 UConn, CLEAR

March 2005  
For general planning purposes only.  
Delineations may not be exact.

GIS by:



COUNCIL OF GOVERNMENTS  
CENTRAL NAUGATUCK VALLEY